



PRICE LIST

GENERAL

Price List includes gross prices. Prices to be applied to a complete door order. Spare part prices can be obtained from the web catalogue on <http://aftersales.toors.cz>.

DOORLEAF

- 40 mm sandwich panels made from galvanised steel sheets filled with polyurethane foam (PUR)
- panel designs according to actual panel offer

TRACK SYSTEM

- vertical and horizontal rails made from 1,5 mm galvanized steel profile
- EXT - extension springs placed in vertical angles, lintel min. 0-125 mm (see Installation drawing), min. reveal 0-95 mm
- LHR-C - torsional springs in rear, min. lintel 100-125 mm (see installation drawing), min. reveal 90 mm
- LHF-C - torsional springs in front, min. lintel 200 mm (manually operated or ceiling operator), min. reveal 90 mm
- SL 350 - torsional springs in front, min. lintel 350 mm (manually operated or ceiling operator), min. reveal 125 mm
- SL 420 - torsional springs in front, min. lintel 420 mm (manually operated or ceiling operator), min. reveal 125 mm
- painted torsion springs for 20 000 cycles / extension springs (EXT) for 25 000 cycles
- nylon rollers with bearing, hinges, bearing plates, cable drums, cables, connection accessories

ACCESSORIES FOR SURCHARGE

- painting
- windows
- handgrips, handles, locks
- pass door
- slide bolts and cylinder locks
- full vision sections (FVE)
- EXT cover profile „L“ a „J“

BASIC CONFIGURATION

spring brake security device	✓
fixing profiles for horizontal tracks	✓
coupling end of the horizontal rails	✓
divided shaft + coupler (W > 3 500 mm)	✓
single side plastic handgrip	✓
65 mm strut for section, 1 pc (W > 4500 mm)	✓
painted white end caps	✓
painted top and bottom profile	✗ ¹
painted pass door profiles	✗
painted profiles of fixed top panel	✗ ¹

1) Top and bottom profile painting is a standard on painted doors.

GUARDY - TRACK TYPE LHF-C, SL 350, SL 420 (€)

		Width [mm]															Number of section
		2 000	2 250	2 500	2 750	3 000	3 250	3 500	3 750	4 000	4 250	4 500	4 750	5 000	5 250	5 500	
Height [mm]	3 000	1196	1267	1328	1417	1507	1649	1725	1778	1878	2077	2177					5
	2 960	1185	1250	1306	1403	1504	1632	1706	1754	1849	2042	2146					5
	2 850	1181	1248	1301	1388	1464	1631	1698	1752	1866	2013	2115	2269				5
	2 740	1155	1221	1273	1353	1427	1587	1669	1726	1822	1986	2088	2234	2322			5
	2 630	1132	1207	1251	1322	1410	1573	1632	1701	1790	1978	2032	2201	2282	2406		5
	2 520	1102	1167	1214	1283	1369	1522	1588	1656	1728	1904	1977	2105	2201	2343	2399	5
	2 460	1047	1103	1154	1221	1291	1438	1507	1571	1655	1803	1893	1968	2058	2228	2281	4
	2 350	1027	1077	1127	1195	1267	1412	1463	1520	1600	1768	1838	1900	1993	2133	2183	4
	2 240	1001	1059	1099	1158	1228	1375	1421	1469	1565	1712	1749	1858	1925	2059	2135	4
	2 130	983	1029	1080	1143	1207	1334	1395	1435	1521	1636	1719	1821	1888	2006	2076	4
2 020	962	1004	1050	1107	1171	1299	1351	1397	1480	1592	1666	1760	1819	1956	2020	4	

Type of track LHR-C 60 €
Preassembled shaft 29 €

GUARDY - TRACK TYPE EXT (€)

		Width [mm]								Number of section
		2 250	2 500	2 750	3 000	3 250	3 500	3 750	4 000	
General height / GH [mm]	2 625		1205	1280	1346	1434				5
	2 500	1088	1162	1238	1318	1420	1496			5
	2 375	985	1066	1136	1194	1302	1365	1428	1475	4
	2 250	957	1040	1105	1163	1257	1333	1390	1438	4
	2 125	934	997	1079	1137	1227	1285	1358	1383	4
	2 080*	919	983	1056	1123	1211	1268	1331	1358	4
	2 000	894	963	1027	1101	1194	1251	1307	1335	4
	1 955*	888	955	1013	1084	1175	1227	1288	1323	4
	1 875	878	939	996	1061	1148	1205	1269	1307	4

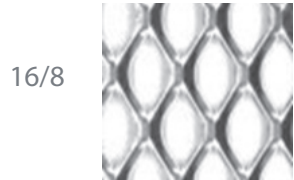
Min. width 2000 mm. If you need torsion springs door system, please kindly contact TOORS to ensure, if applicable for bellow 2000 mm width.

* Renovation sets painted on RAL 9016

VARIOUS GLAZING OF FVE^{*)} SECTIONS

		<p>SIMPLE GLAZING</p> <p>Material: PMMA, polycarbonate Glazing design: transparent, satin, opal</p>
		<p>DOUBLE GLAZING</p> <p>Material: PMMA, polycarbonate Glazing design: transparent, satin, opal</p>
		<p>INSULATED ALUMINIUM FILLINGS</p> <p>Material: aluminium, polystyrene Design: stucco/stucco</p>
		<p>VENTILATION FILLINGS</p> <p>Material: natural aluminium Design: mesh 16/8, 22/12, 10/10</p>

Expanded mesh options



air permeability 56%



air permeability 67%

Perforated plate

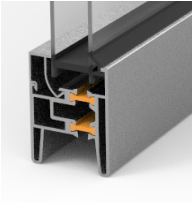


air permeability 51%

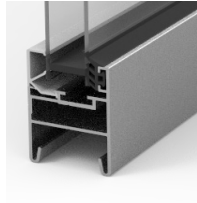
Coloured pane options

f	frosted satin
w	R-structure
m	milk (opal)
s	smoked glass

FVE WITH THERMAL BREAK



FVE WITHOUT THERMAL BREAK



*) FVE - aluminum glass section

SURCHARGES FOR VARIOUS GLAZING OF FVE^{*)} SECTION WITHOUT THERMAL BREAK (€)

Code No.:	Description of glazing: Width [mm]:	2 250	2 500	2 750	3 000	3 250	3 500	3 750	4 000	4 250	4 500	4 750	5 000	5 250	5 500
220	Single wall PMMA: 1 × 2,5 mm PMMA	128	125	143	141	166	164	168	180	193	190	261	270	335	332
230	Single wall polycarbonate: 1 × 3,0 mm polycarbonate	195	200	226	231	265	270	283	303	323	329	408	420	492	498
240	Single wall - tempered glass: 1 × 4,0 mm tempered glass	226	242	271	287	320	336	357	382	407	423	484	496	553	569
250	Double wall PMMA, 2 × 2,5 mm PMMA	159	163	183	187	216	220	230	245	262	266	334	341	404	408
251	Double wall PMMA abrasion resistant: 2 × 2,5 mm PMMA - 1× ANTI SCRATCH	191	199	223	231	263	271	285	304	325	332	404	413	479	487
252	Double wall PMMA abrasion resistant: 2 × 2,5 mm PMMA - 2× ANTI SCRATCH	223	235	263	274	310	322	340	363	387	399	474	485	555	567
250.C	Double wall PMMA with coloured panes: 2 × 2,5 mm PMMA	206	215	241	250	285	294	310	330	353	363	436	445	514	523
260	Double wall polycarbonate: 2 × 3,0 mm polycarbonate	251	266	297	312	352	367	388	414	442	457	536	547	621	636
270	Insulated aluminium stucco fillings: 2 × 0,6 mm aluminium stucco sheet + 20 mm polystyrene	220	231	258	270	306	317	334	356	381	392	467	477	547	558
280	Expanded mesh: natural aluminium - mesh 16/8	121	118	135	132	157	154	157	169	180	177	247	256	320	316
281	Expanded mesh: natural aluminium - mesh 22/12	152	152	173	173	201	201	208	224	238	238	312	322	391	391
282	Perforated plate (10x10mm, bond 4mm)	162	180	198	215	233	251	269	287	305	323	341	359	377	395

BEST-SELLING

*) FVE - aluminum glass section

SURCHARGES FOR VARIOUS GLAZING OF FVE^{*)} SECTION WITH THERMAL BREAK (€)

Code No.:	Description of glazing: Width [mm]:	2 250	2 500	2 750	3 000	3 250	3 500	3 750	4 000	4 250	4 500	4 750	5 000	5 250	5 500
250	Double wall PMMA, 2 × 2,5 mm PMMA	270	276	302	307	360	366	378	399	429	434	524	536	628	634
251	Double wall PMMA abrasion resistant: 2 × 2,5 mm PMMA - 1× ANTI SCRATCH	307	317	348	357	415	425	441	467	501	511	605	619	716	725
252	Double wall PMMA abrasion resistant: 2 × 2,5 mm PMMA - 2× ANTI SCRATCH	344	358	393	408	470	484	505	534	574	588	686	701	803	817
250.C	Double wall PMMA with coloured panes: 2 × 2,5 mm PMMA	324	336	368	380	440	452	470	497	534	546	642	656	755	767
260	Double wall polycarbonate: 2 × 3,0 mm polycarbonate	376	394	433	451	517	535	560	594	637	655	757	774	879	897
270	Insulated aluminium stucco fillings: 2 × 0,6 mm aluminium stucco sheet + 20 mm polystyrene	340	354	389	402	464	478	498	527	566	580	678	693	793	807

*) FVE - aluminum glass section

ACCESSORIES (€)

Panels		Price	Unit
Panel Lamela Stucco	in the basic door price	included	
Panel DB 703	accessories (calculated as percentage from basic price door)	5%	
Wood imitation panel surface	accessories (calculated as percentage from basic price door)	15%	
Other panels	accessories (calculated as percentage from basic price door)	0%	
Painting		Price	Unit
Painting in RAL or NCS colour	per side	34	per m ²
Painting in metallic RAL colour	per side	97	per m ²
Painting with fine/coarse sand structure	per side	38	per m ²
Painting of FVE in RAL or NCS	per side	34	per m ²
Painting insulated aluminum stucco fillings in RAL or NCS	per side	34	per m ²
Painting ventilation fillings in RAL or NCS	double-faced painting only	61	per pc
Painting top/bottom Al profile in RAL or NCS	per side (not painted panel)	17	per meter (W)
Painting top/bottom Al profile in RAL or NCS*	per side, painting in the same colour as painted panel	included	per meter (W)
Painting pass door Al profiles in RAL or NCS	per side (not painted panel)	200	per pc
Painting pass door Al profiles in RAL or NCS*	per side, painting in the same colour as painted panel	included	per pc
Painting Al profile of fixed top panel in RAL or NCS	per side (not painted panel)	17	per meter (circuit)
Painting Al profile of fixed top panel in RAL or NCS*	per side, painting in the same colour as painted panel	included	per meter (circuit)
Painting of fixed top panel in RAL or NCS	per side	47	per m ²
Painting of fixed top panel in metallic RAL	per side	132	per m ²
Painting of FVE fixed top panel in RAL or NCS	per side	38	per m ²
Painting of window frames	per side	49	pc
Painting of air grates	per side	27	pc

* if the panel is painted, the top/bottom profiles are painted as well

ACCESSORIES

Hanging and consolidation equipment	Price	Unit
Perforated galvanized diagonal, round / oval holes, 30 x 30 x 3000 mm	18 €	pc
Fixing of horizontal tracks (bracket + „L“ profile 176/350/408 mm)	18 €	pair

Fixed top panel	Price	Unit
Fixed top panel, max. W = 8000 mm	H ≤ 250 mm	64 € per meter (W)
	250 < H < 620	79 € per meter (W)
Fixed top panel FVE, max. W = 7000 mm	250 < H < 620	146 € per meter (W)

Pass door	Price	Unit
Pass door, closer with sliding arm, incl. lock, handle/handle	850 €	pc
Extra low treshold (18 mm); only for W ≤ 5000 mm (surcharge to the pass door price)	200 €	pc
Door spring with sliding arm	0 €*	pc
Pass door contact	0 €*	pc

Security devices for track system with torsion springs	Price	Unit
Security devices for track system with torsion springs	0 €*	pc
Cable break security device, adjustable, only for SL track system, for 2" rails, 11 mm roller shaft	63 €	pair

Torsion springs	Price	Unit
20 000 cycles	0 €*	pair
50 000 cycles	138 €	pair
100 000 cycles	375 €	pair

Reinforcing struts	Price	Unit
Reinforcing struts 65 mm	W ≤ 4500	12 € per meter (W)
	W > 4500	0 €* per meter (W)

Double side hinges	Price	Unit
W ≤ 5000 mm	22 €	per section
W > 5000 mm	0	per section

Air grates	Price	Unit
Plastic air grate, can be closed (black/white; white/white)	32 €	pc

* price included

Non-standard panel cuts		Price	Unit
Non-standard composition of door blade - cut	(unchanged number of panels)	100 €	pc of door
Non-standard composition of door blade - cut + panel	(for next pc of new panel)	100 € / pc of door + 53 € per meter (W)	pc of door
Sealing		Price	Unit
Low bottom sealing for garage door		0 €*	per meter (W)
Bottom sealing with chamber for optical safety edge		8 €	
Double upper sealing (only for LHF, LHR and SL track systems with combination of top sealing on top panel section)		8 €	
Door leaf packing		Price	Unit
Standard packing		0 €*	pc
Side closed by chipboard		101 €	pc
Light ("Two-men") packing		112 €	pc
Packing "container"		144 €	pc
Certified packaging according to ISPM 15		33 €	pc
Others		Price	Unit
Door including logo		0 €*	pc
Door without logo ("NONAME")		0 €*	pc
Full manual		6 €	pc
Stopper for manually operated door		8 €	pair
Changes in door specification after releasing to production		Price	Unit
Changes in door specification after releasing to production (no customized materials purchased)		100 € **	per position
Changes in door specification after releasing to production (customized materials already purchased)		100 € + material*	per position

* price included

** nett price

ACCESSORIES - (€)

Cover profiles and lintel profile	Standard (RAL 9010)	Painting (RAL another)	Unit
Vertical cover profile „L“ General height 1875; 2000; 2125 mm	97	152	pair
Vertical cover profile „L“ General height 2250; 2375; 2500; 2625 mm	101	141	pair
Vertical cover profile „J“ General height 1875; 2000; 2125 mm	90	117	pair
Vertical cover profile „J“ General height 2250; 2375; 2500; 2625 mm	156	204	pair
Top cover profile „L“ Width (W) ≤ 2225 mm	51	66	pc
Top cover profile „L“ Width (W) ≥ 2226 ≤ 2725 mm	76	99	pc
Top cover profile „L“ Width (W) ≥ 2726 ≤ 3000 mm	91	119	pc
Top cover profile „L“ Width (W) ≥ 3001 mm	102	129	pc
Lintel profile	price included	21	per meter (W)

Sealing EXT	Price	Unit
Vertical sealing with TB	12	per meter height (H)
Seal for lintel without TB	6	per meter width (W)

Side space < 95mm	Price	Unit
Kit for mounting with a side space less than 95mm	40	pc

203 Oval CLICK

64 €

T09-010-40-0001

- black smooth frame
- transparent double glazing, PMMA
- click system
- frame dimensions 663 x 343 mm
- glazing dimensions 580 x 265 mm



205 NG Rectangular CLICK

62 €

T09-010-40-0095

- black smooth frame
- transparent double glazing, PMMA
- click system
- frame dimensions 680 x 373 mm
- glazing dimensions 605 x 298 mm



207 Rectangular 2

68 €

T09-010-40-0087

- black smooth frame
- transparent double glazing, PMMA
- frame dimensions 609 x 146 mm
- glazing dimensions 540 x 85 mm



204 Rectangular 3

53 €

T09-010-40-0072

- White frame woodgrain
- Transparent double glazing, PMMA
- Frame dimensions 490 x 325 mm
- Glazing dimensions 430 x 260 mm



206 Rectangular 4

62 €

T09-010-40-0073

- White frame woodgrain
- Satin double glazing, PMMA
- Frame dimensions 490 x 325 mm
- Glazing dimensions 430 x 260 mm



208 Rectangular 5

53 €

T09-010-40-0088

- Brown frame woodgrain
- Transparent double glazing, PMMA
- Frame dimensions 490 x 325 mm
- Glazing dimensions 430 x 260 mm



210 Rectangular 7

53 €

T09-010-40-0074

- Black frame woodgrain
- Transparent double glazing, PMMA
- Frame dimensions 490 x 325 mm
- Glazing dimensions 430 x 260 mm



216 Rectangular 9

59 €

T09-010-40-0053

- silver smooth frame
- transparent double glazing, PMMA
- frame dimensions 637 x 334 mm
- glazing dimensions 550 x 247 mm



218 Rectangular stainless steel

216 €

T09-010-40-0071

- stainless steel
- transparent double glazing, SAN
- safety glass
- frame dimensions 230 x 230 mm
- glazing dimensions 150 x 150 mm



215 Round stainless steel

243 €

T09-010-40-0070

- stainless steel
- transparent single glazing, PMMA
- safety glass
- frame dimension \varnothing 330 mm
- glazing dimensions \varnothing 260 mm



217 Round

79 €

T09-010-40-0010

- black smooth frame
- transparent double glazing, PMMA
- frame dimension \varnothing 330 mm
- glazing dimensions \varnothing 260 mm



219 Rectangular stainless steel

316 €

T09-010-40-0069

- stainless steel
- transparent double glazing, SAN
- safety glass
- frame dimensions 310 x 310 mm
- glazing dimensions 230 x 230 mm



LOCKS, HANDLES AND CYLINDER OPTIONS

KL01 Handle/handle standard configuration

0 €



OUTSIDE:

- Handle, shield

INSIDE:

- Handle, shield

INNER ELEMENTS:

- Mortise lock
- Key cylinder + 3 pcs key

KL02 Knob/handle

51 €



OUTSIDE:

- Knob, shield

INSIDE:

- Handle, shield

INNER ELEMENTS:

- Mortise lock
- Key cylinder + 3 pcs key

Door can be opened only with key from outside (with handle from inside if not locked).

KL03 Handle/handle + key cylinder with button

29 €



OUTSIDE:

- Handle, shield

INSIDE:

- Handle, shield, button

INNER ELEMENTS:

- Mortise lock
- Key cylinder + 3 pc key

Door can be locked with button from inside (with key from outside).

KL04 Knob/handle key cylinder with button

78 €



OUTSIDE:

- Knob, shield

INSIDE:

- Handle, shield, button

INNER ELEMENTS:

- Mortise lock
- Key cylinder + 3 pc key

Door can be opened only with key from outside (with handle from inside if not locked). Door can be locked with button from inside (with key from outside).

KL05 Panic lock handle/handle

165 €



OUTSIDE:

- Handle, shield

INSIDE:

- Handle, shield

INNER ELEMENTS:

- Panic lock - function D
- Key cylinder with free tooth + 3 pc key

Door can be opened with handle from inside anytime - even if lock is locked (with handle from outside if not locked).

KL06 Panic lock knob/handle

192 €



OUTSIDE:

- Knob, shield

INSIDE:

- Handle, shield

INNER ELEMENTS:

- Panic lock - function E
- Key cylinder with free tooth + 3 pc key

Door can be opened with handle from inside anytime - even if lock is locked (with key from outside).

LOCKS, HANDLES AND CYLINDER OPTIONS

KL13 Panic lock device handle/exit bar

250 €



OUTSIDE:

- handle, shield, key hole

INSIDE:

- exit bar (single-point-construction)

INNER ELEMENTS:

- panic lock - function D
- key cylinder with free tooth + 3 pc key

Door can be opened with exit bar from inside anytime - even if lock is locked (with handle from outside if not locked).

Low Lift: Clear opening if the door is open is H - 40 mm.

KL14 Panic lock device knob/exit bar

300 €



OUTSIDE:

- knob, shield, key hole

INSIDE:

- exit bar (single-point-construction)

INNER ELEMENTS:

- panic lock - function E
- key cylinder with free tooth + 3 pc key

Door can be opened with exit bar from inside anytime - even if lock is locked (with key from outside if not locked).

Low Lift: Clear opening if the door is open is H - 40 mm

Electric Lock Befo 2412

300 €

T09-040-65-0107

- Electric Lock Befo
- Suitable for Passdoor
- Inkl. Installation + wiring
- Voltage 24V DC/AC



KL17 Panic lock handle/handle

563 €



OUTSIDE:

- Handle, shield

INSIDE:

- Handle, shield

INNER ELEMENTS:

- Panic lock - function B
- Key cylinder with free tooth + 3 pc key

When the key is turned from the outside, the deadbolt is pulled and the cylinder is unlocked and then the arrow is pulled and the lock is switched to the permanently open state. The door can then only be opened from the outside with the handle until the key is relocked.

KL18 Panic lock device handle/exit bar

710 €



OUTSIDE:

- handle, shield, key hole

INSIDE:

- exit bar (single-point-construction)

INNER ELEMENTS:

- panic lock - function B
- key cylinder with free tooth + 3 pc key

When the key is turned from the outside, the deadbolt is pulled and the cylinder is unlocked and then the arrow is pulled and the lock is switched to the permanently open state. The door can then only be opened from the outside with the handle until the key is relocked.

SLIDE BOLTS AND CYLINDER LOCKS

490 Slide bolt

9 €

T09-040-65-0095

- Galvanized, with black plastic knob
- Not recommended for FVE sections
- Placing: left, right, left + right



491 Slide bolt

8 €

T09-040-65-0025

- Galvanized
- Not recommended for FVE sections
- Placing: left, right, left + right

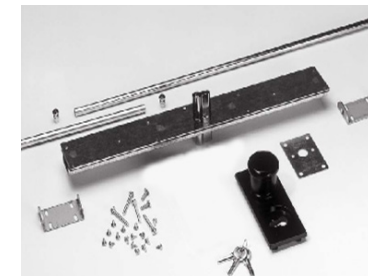


492B Cylinder lock

184 €

T09-040-65-0079

- Black-plated
- Double-sided up to $W = 2500$ mm; if $W > 2500$ mm extra long rods must be used (up to $W = 5000$ mm) or the lock is to be placed either left or right
- Not for FVE sections
- Placing: left, right, middle



493B Cylinder lock

156 €

T09-040-65-0081

- black-plated
- double-sided up to door width 2500 mm
- if door width > 2500 mm the lock can be placed only left or right
- cannot be built into FVE
- only for SL
- placing: left, right, middle



495 Cylinder lock

118 €

T09-005-0062

- Black-plated
- Not for FVE sections
- Placing: left, right



492B Pendulum rod (pair)

20 €

T09-040-65-0083

- Extra long lock rod for 492B
- Can be used for wider doors ($W = 2500 - 5000$ mm) and/or for excentric positioning of the lock
- Galvanized steel
- Weight 0,5 kg/pc L=2450 mm/pc



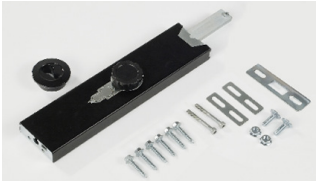
SLIDE BOLTS AND CYLINDER LOCKS

498 Cylinder lock

137 €

T09-040-65-0023

- Black
- Not for FVE sections
- Placing: left, right, left + right



497B Cylinder lock

150 €

T09-040-65-0028

- Black outside and inside
- Flush-mounted knob on outside
- Not for FVE sections
- Placing: left, right, left + right



499B Cylinder lock

204 €

T09-005-0064

- Black outside, galvanized inside
- Flush-mounted knob on outside
- Not for FVE sections
- Placing: left, right, middle, left + right



499S Cylinder lock

204 €

T09-005-0065

- Silver outside, galvanized inside
- Flush-mounted knob on outside
- Not for FVE sections
- Placing: left, right, middle, left + right



499 Pendulum rod (pair)

20 €

T09-040-65-0143

- Extra long lock rod for 499B and 499S
- Can be used for wider doors (W = 2500 - 5000 mm) and/or for excentric positioning of the lock
- Galvanized steel
- Weight 0,5 kg/pc; L = 1200 - 2350 mm/pc



466 Handgrip single-sided

3 €

T09-040-65-0088

- Rounded, black, plastic
- To be installed on panel
- 1st piece in basic price
- Placing: left, right, middle

1 pc of this handgrip is in Guardy door basic price already included.



467 Handgrip double-sided

5 €

T09-040-70-0143

- Rounded, black, plastic
- To be installed on panel
- Placing: left, right, middle



468 Handgrip double-sided

37 €

T09-040-65-0087

- Oval, black, plastic
- Handgrip is to be inserted into hole that is cut in the panel
- Not for FVE
- Placing: left, right, middle, left + right



460 Handgrip double-sided

12 €

T09-040-65-0009

- Black, plastic
- Handgrip is to be inserted into hole that is cut in the panel
- Not for FVE
- Placing: left, right, middle, left + right

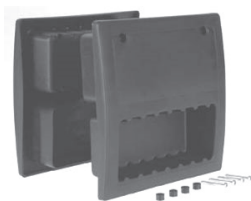


463 Handgrip double-sided

20 €

T09-040-65-0106

- Rectangular, black, plastic
- Built into panel
- Not for FVE
- Placing: left, right, middle, left + right



469B Handgrip double-sided

40 €

T09-040-65-0141

- Round, Aluminum black coated
- Handgrip is to be inserted into hole that is cut in the panel
- Not for FVE
- Placing: left, right, middle, left + right



TORMATIC DRIVES' ACCESSORIES

WB800 ZS30 / ZS40

336 € (ZS30) | 367 € (ZS40)
T09-051-10-0045 | T09-051-10-0046

- Motorhead WB800, 800 N, 230 V, 2 pcs 3-channel hand transmitter, 868 MHz
- Max. door leaf area 13 m²
- ZS30 (steel track with toothed belt) max. door height 2375 mm
- ZS40 (steel track with toothed belt) max. door height 3000 mm



BLACK 800 ZS30 / ZS40

395 € (ZS30) | 429 € (ZS40)
T09-051-10-0038 | T09-051-10-0039

- Motorhead BLACK800, 800 N, 230 V, 2 pcs 3-channel hand transmitter, 868 MHz
- Max. door leaf area 15 m²
- ZS30 (steel track with toothed belt) max. door height 2375 mm
- ZS40 (steel track with toothed belt) max. door height 3000 mm



BLACK 1000 ZS30 / ZS40

669 € (ZS30) | 750 € (ZS40)
T09-051-10-0040 | T09-051-10-0041

- Motorhead BLACK1000, 1000 - 1200 N, 230 V, 2 pcs 3-channel hand transmitter, 433 MHz
- Door leaf area >15 m²
- ZS30 (steel track with toothed belt) max. door height 2375 mm
- ZS40 (steel track with toothed belt) max. door height 3000 mm



BLACK1200 ZS30 / ZS40

876 € (ZS30) | 943 € (ZS40)
T09-051-10-0042 | T09-051-10-0043

- Motorhead BLACK1200, 1000 - 1200 N
- 2pcs 3-channel hand transmitter, 433 MHz
- For underground garages (with up to 50 parking spaces)
- Automatic closing
- Option of connecting traffic light controls
- ZS30 (steel track with toothed belt) max. door height 2375 mm
- ZS40 (steel track with toothed belt) max. door height 3000 mm



RUN 500

248 € (H ≤ 2125 mm) | 278 € (incl. ext. kit)
T09-051-10-0021 | T09-051-10-0021 +
T09-051-80-0007

- Motorhead RUN 500, 500 N, 2 pcs 2-channel hand transmitter, 433 MHz
- Max. door leaf area 9 m²
- Preassembled 3-part-chain- track
- Door height ≤ 2125 mm
- For door height 2126 - 3 000 mm incl. extention set



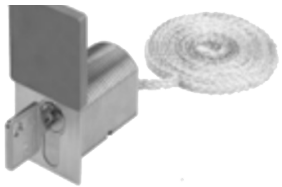
TORMATIC DRIVES' ACCESSORIES

External release

43 €

T09-051-40-0006

- External release for sectional door with ceiling operator (obligatory if there is no other entrance in the room)
- Key cylinder and cover
- Ground aluminium appearance



External release

33 €

T09-051-40-0007

- External release for sectional door with ceiling operator (obligatory if there is no other entrance in the room)
- Round key cylinder ø 20 mm

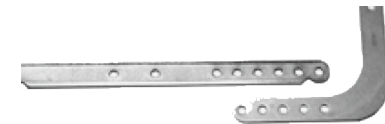


DF 450

21 €

T09-051-40-0002

- Door fitting for mounting with lintel over 230 mm



External receiver, Tormatic

111 €

T09-051-50-0019, 868 MHz

T09-051-50-0003, 433 MHz

- Receiver, 868 MHz, one relay output
- KeeLoq hopping code
- Connection voltage 12-24 V
- For external installation



Code keyboard DigiCode

154 €

T09-051-50-0020, 868 MHz

T09-051-50-0012, 433 MHz

- Foil keyboard
- Wireless
- KeeLoq hopping code



Wall remote control DuoControl

74 €

T09-051-50-0021, 868 MHz

T09-051-50-0014, 433 MHz

- 2-channel touch control
- Wireless
- KeeLoq hopping code



TORMATIC DRIVES' ACCESSORIES

KT 3/1 AP

48 €
T09-051-50-0005

- Key switch on plaster



KT 3/1 UP

48 €
T09-051-50-0006

- Key switch under plaster



Traffic light control

535 €
T09-051-50-0008

- Traffic light controls
- For BLACK 1200



Light barrier Tormaticc

49 €
T09-051-60-0001

- Up to 8m range
- IP45
- 24 V AC/DC
- Autotesting function



Remote control Tormatic

38 €
T09-051-50-0024, 868 MHZ
T09-051-50-0025, 433 MHZ

- 3-channel hand transmitter
- KeeLoq hopping code



TORMATIC DRIVES' ACCESSORIES

Signal lamp

87 €

T09-051-40-0004

- Signal light green
- 230 V/50 Hz



87 €

T09-051-40-0003

- Signal light red
- 230 V/50 Hz



Spiral cable

80 €

T09-050-30-0003

- Spiral cable 1000/350-900
- Cable with connection box and plugs



ALU TH

- Aluminium track with chain guide

For door height max. 3000 mm	242 € T09-051-10-0018
---------------------------------	--------------------------

For door height max. 3750 mm	326 € T09-051-10-0017
---------------------------------	--------------------------

For door height max. 4750 mm	356 € T09-051-10-0015
---------------------------------	--------------------------



DRIVES AND ACCESSORIES CUBE

Cube 1100N

270 €
T09-050-14-0001

- 1100N, 230V
- max. doorleaf area 11m²
- 868 MHz
- incl. rail 3500mm and 2pc remote controls
- max. door height 2500mm

Cube 1100N

282 €
T09-050-14-0002

- 1100N, 230V
- max. doorleaf area 11m²
- 868 MHz
- incl. rail 4000mm and 2pc remote controls
- max. door height 3000mm



Remote control, Cube

29,75 €
T09-050-13-0004

- 868 MHz
- 4 channel



Wall switch, Cube

29,25 €
T09-050-14-0005

- 868 MHz
- 3 channel



Keypad, Cube

63,38 €
T09-050-14-0004

- 868 MHz



ACCESSORIES CUBE

Warning light, Cube

38,50 €
T09-050-14-0007

- yellow warning light
- 12-240V AC/DC



Photocells, Cube

61,75 €
T09-050-14-0006

- working range 15m



External receiver, Cube

58,50 €
T09-050-14-0003

- 3 channel
- 868 MHz



Wifi modul, Cube

64,90 €
T09-050-14-0008

- for operating through application



Comfort 260 Speed

279 €

T09-051-20-0001

- 650N, 230V
- max. doorleaf area <math>< 9\text{m}^2</math>
- incl. 1pc remote control
- 868 MHz



Comfort 270 Speed

314 €

T09-051-20-0002

- 850N, 230V
- max. doorleaf area <math>< 14\text{m}^2</math>
- incl. 1pc remote control
- 868 MHz



Comfort 280

320 €

T09-051-20-0003

- 1000N, 230V
- max. door weight >math>14\text{m}^2</math>
- incl. 1pc remote control
- 868 MHz



Guide rail with belt SZ11

108 €

T09-051-20-0010

- length 3080mm
- max. door height 2250mm



Guide rail with belt SZ12

125 €

T09-051-20-0011

- length 3330mm
- max. door height 2500mm



Guide rail with belt SZ13

158 €

T09-051-20-0012

- length 4090mm
- max. door height 3000mm



ACCESSORIES MARANTEC

Remote Control Digital 572

43 €
T09-051-20-0020

- 2 channel
- 868 MHz



Remote Control Digital 564

45 €
T09-051-20-0021

- 4 channel
- 868 MHz



Remote Control Digital 506

75 €
T09-051-20-0022

- 10 channel
- 868 MHz



DuoControl Digital 520

43 €
T09-051-20-0023

- 2 channel
- 868 MHz



Code Keyboard Digital 526

85 €
T09-051-20-0024

- 868 MHz



External receiver Digital 992

75 €
T09-051-20-0025

- 868 MHz



EM171

128 €
T09-051-20-0026

- Expansion module



Extension profile, Marantec

8 €
T09-051-20-0028

- 104-204mm

